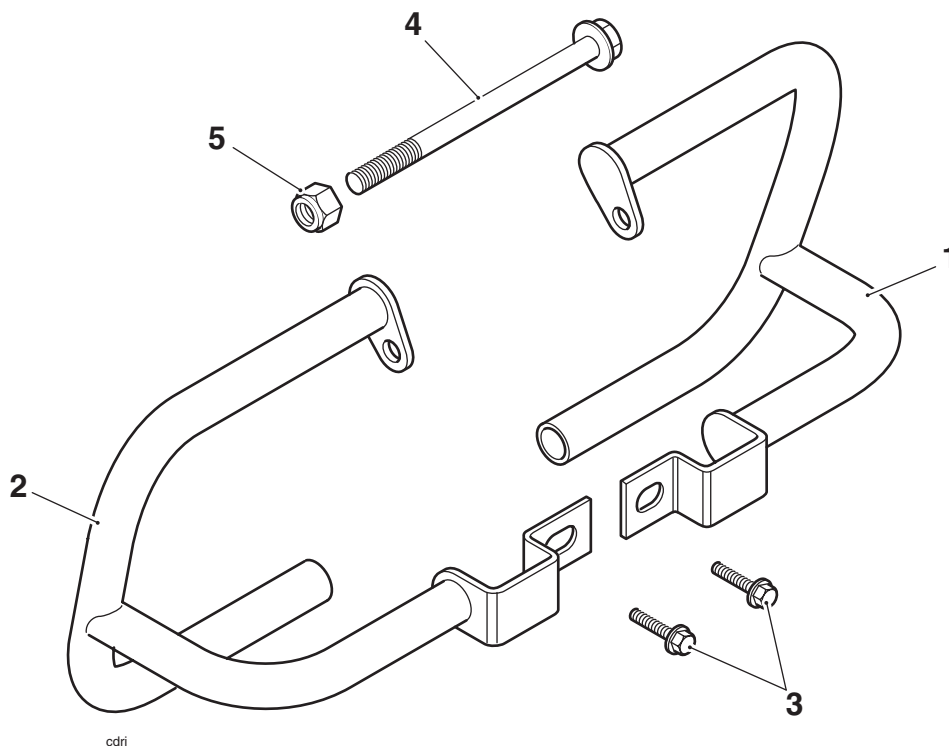


Fitting Instructions:

Scrambler

Dresser Bar Kit, Front - A9758015

Dresser Bar Kit, Front, Black - A9758025



Parts Supplied:

- 1. Dresser bar, LH 1 off
- 2. Dresser bar, RH 1 off
- 3. Bolt, M8 x 20 mm 2 off

- 4. Bolt, M12 x 135 mm. 1 off
- 5. Locknut. 1 off

Warning

This accessory kit is designed for use on Triumph Scrambler motorcycles only and should not be fitted to any other Triumph model or to any other manufacturer's motorcycle. Fitting this accessory kit to any other Triumph model or to any other manufacturer's motorcycle, may interfere with the rider and could affect the stability and handling of the motorcycle leading to loss of control and an accident.

Warning

Always have Triumph approved parts, accessories and conversions fitted by a trained technician of an authorised Triumph Dealer. The fitment of parts, accessories and conversions by a technician who is not of an authorised Triumph dealer may affect the handling, stability or other aspects of the motorcycles operation which may result in loss of motorcycle control and an accident.

Warning

Throughout this operation, ensure that the motorcycle is stabilised and adequately supported on a paddock stand to prevent risk of injury from the motorcycle falling.

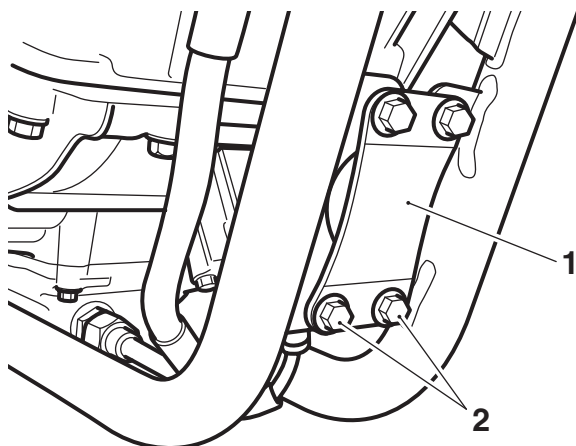
NOTE

- **Completely read all the instructions before commencing the installation and set up of the engine dresser bar kit in order to become thoroughly familiar with the kit's features and the installation process.**

1. Slacken and remove the lower two bolts from the downtube brace.

NOTE

- **Retain the bolts for re-use if the motorcycle is returned to original condition.**



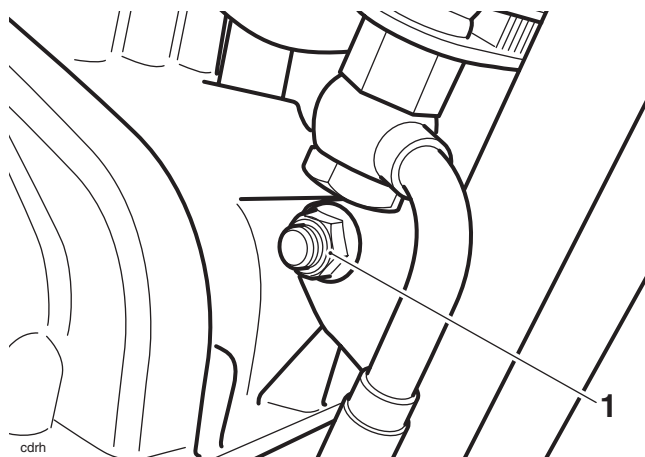
1. Downtube brace

2. Lower bolts

2. Undo and remove the locknut from the front engine mounting bolt, support the engine and withdraw the bolt.

NOTE

- **Retain the locknut and bolt for re-use if the motorcycle is returned to original condition.**

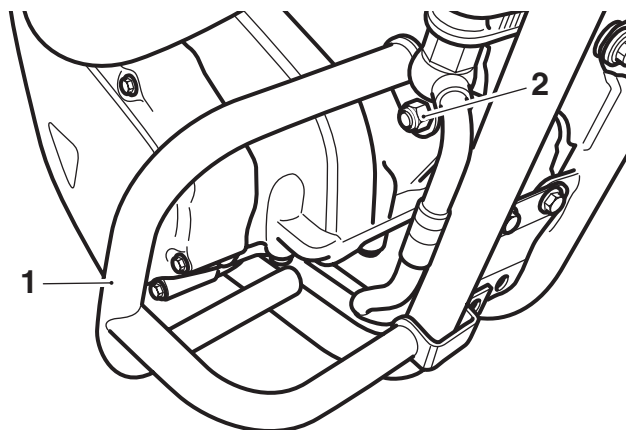


1. Engine mounting locknut/bolt

3. Inserting the bolt from the left-hand side, secure both dresser bars to the engine mounting with the supplied M12 x 135mm bolt. Fit but do not tighten the new locknut.

NOTE

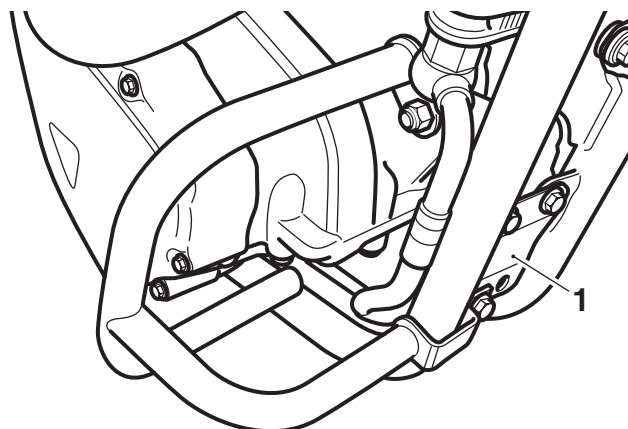
- **The dresser bars are handed.**



1. Dresser bar (right-hand shown)

2. Engine mounting locknut/bolt

4. Using the supplied M8 x 20mm bolts, secure the dresser bars to the downtube brace and frame. Tighten the bolts to **22 Nm**.



1. Downtube brace

5. Tighten the front engine mounting bolt and locknut to **80 Nm**.

6. Remove the engine support.

 **Warning**

After fitting this accessory kit, the motorcycle will exhibit new handling characteristics. Operate the motorcycle in a safe area free from traffic to gain familiarity with any new handling characteristics. Operation of the motorcycle when not familiar with any new handling characteristics may result in loss of motorcycle control and an accident.

 **Warning**

If, after fitment of the accessory kit, there is any doubt as to any aspect of the performance of the motorcycle, contact an authorised Triumph dealer and do not ride the motorcycle until the authorised dealer has declared it fit for use. Riding a motorcycle when there is any doubt as to any aspect of the performance of the motorcycle may result in loss of control of the motorcycle leading to loss of motorcycle control and an accident.

 **Warning**

Never ride an accessory equipped motorcycle at speeds above the legal speed limit or at a speed inappropriate for the circumstances. Speeds in excess of 130 km/h (80 m.p.h.) should not be attempted on an accessory equipped motorcycle even where the legal speed limit permits this. The presence of accessories will cause changes in the stability and handling of the motorcycle. Failure to allow for changes in motorcycle stability may lead to loss of control or an accident. Remember that the 130 km/h (80 m.p.h.) absolute limit will be reduced by the fitting of non-approved accessories, incorrect loading, worn tyres, overall motorcycle condition and poor road or weather conditions.

 **Warning**

This motorcycle must not be operated above the legal road speed limit except in authorised closed course conditions.

 **Warning**

Only operate this Triumph motorcycle at high speed in closed-course on-road competition or on closed course racetracks. High speed operation should only be attempted by riders who have been instructed in the techniques necessary for high speed riding and are familiar with the motorcycle's characteristics in all conditions. High speed operation in any other circumstances is dangerous and will lead to loss of motorcycle control and an accident.