

Fitting Instructions:

Bonneville, Bonneville T100, Bonneville 900, Thruxton & Scrambler Auxiliary Power Socket

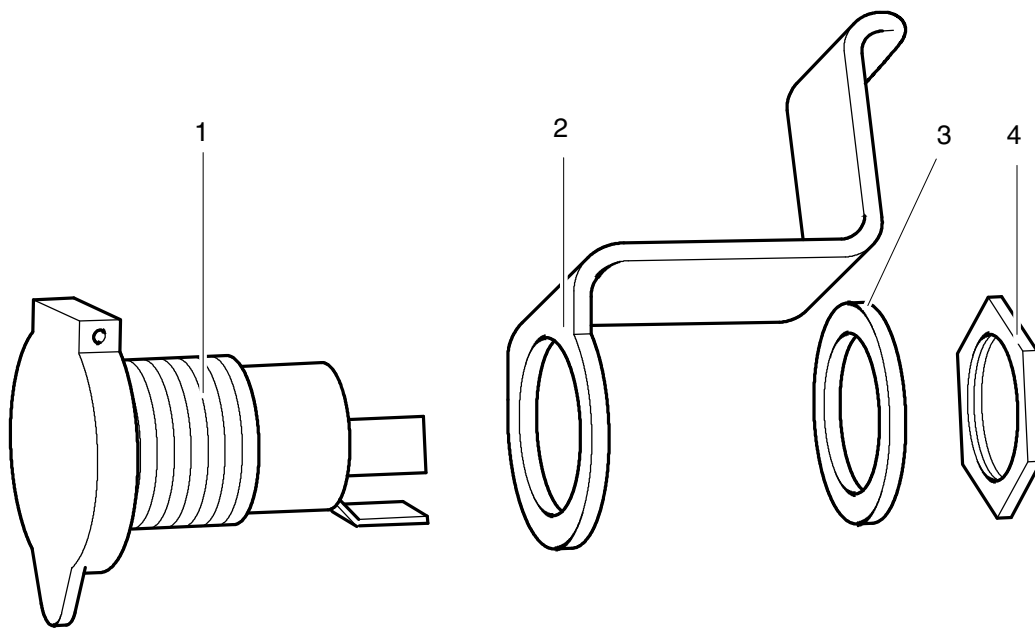


Warning

Always have Triumph approved parts, accessories and conversions fitted by a trained technician of an authorised Triumph dealer. The fitment of parts, accessories and conversions by a technician who is not of an authorised Triumph dealer may affect the handling, stability or other aspects of the motorcycles operation which may result in an accident causing injury or death.

Warning

Throughout this operation, ensure that the motorcycle is stabilised and adequately supported to prevent the risk of injury from the motorcycle falling.



T908.APS.01

Warning

This kit is designed for use on Triumph Bonneville, Bonneville T100, Bonneville 900, Thruxton and Scrambler motorcycles and should not be fitted to any other Triumph model or motorcycles of other manufacturers. Fitting this kit to any other Triumph models or to any motorcycles of other manufacturers may interfere with the rider and could affect the stability and handling of the motorcycle leading to an accident causing injury or death.

Parts Supplied:

- | | | | |
|-------------------------------------|-------|-----------------------|--------|
| 1. Auxiliary power socket | 1 off | 4. Nut | 1 off |
| 2. Mounting bracket | 1 off | 5. Caged nut. | 1* off |
| 3. Washer | 1 off | 6. Screw | 1* off |

**Not illustrated*

Dresser rail installation

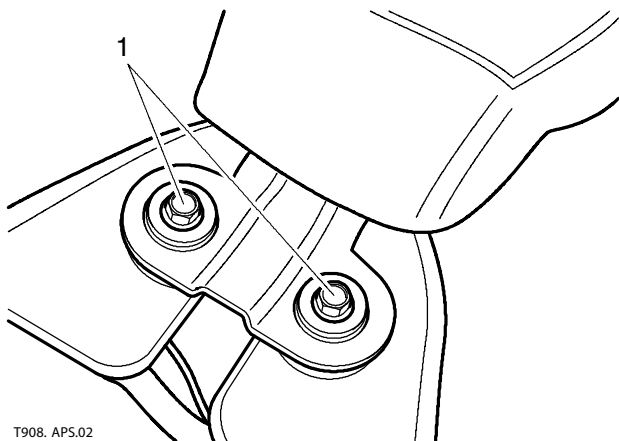
1. Undo the two screws from under the rear of the seat and remove the seat.
2. Disconnect the battery, disconnecting the negative (-) lead first.
3. Turn the fuel tap OFF and disconnect the hose from the tap.



Warning

Observe the warning advice given in the service manual on the safe handling of fuel and fuel containers. A fire, causing personal injury and damage to property could result from spilled fuel or fuel not handled or stored correctly.

4. Slacken and remove the fuel tank mounting bolts.



T908. APS.02

1. Fuel tank mounting bolts

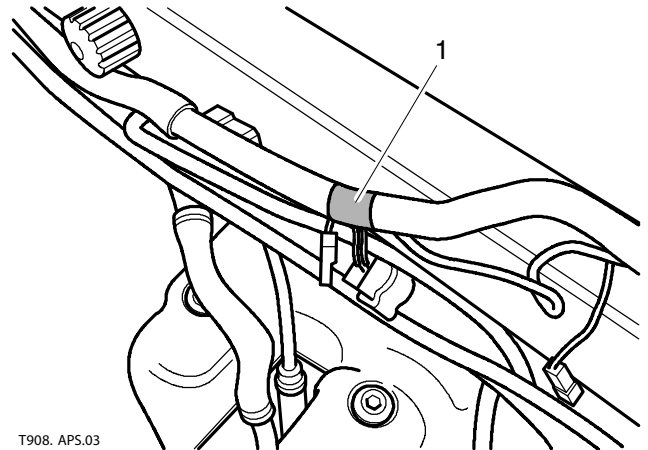
5. Disconnect the breather hose from the right-hand side of the tank.

NOTE

- On California models, this hose is the evaporative loss system hose. Plug the hose end whilst it is disconnected.

6. Remove the fuel tank, taking care not to lose the mounting rubbers.

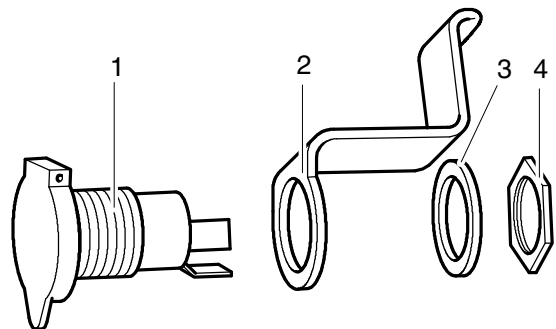
7. Remove the blue tape and free the auxiliary power socket wiring connector from the main harness.



T908. APS.03

1. Blue tape retaining socket wiring

8. Assemble the auxiliary power socket, mounting bracket, washer and nut. Securely tighten the nut.



T908. APS.01

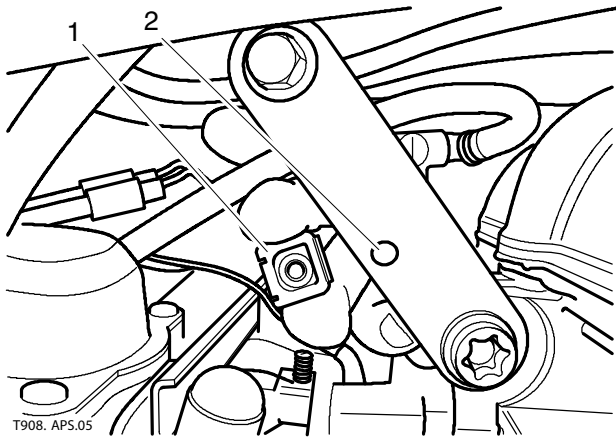
1. Auxiliary power socket

2. Mounting bracket

3. Washer

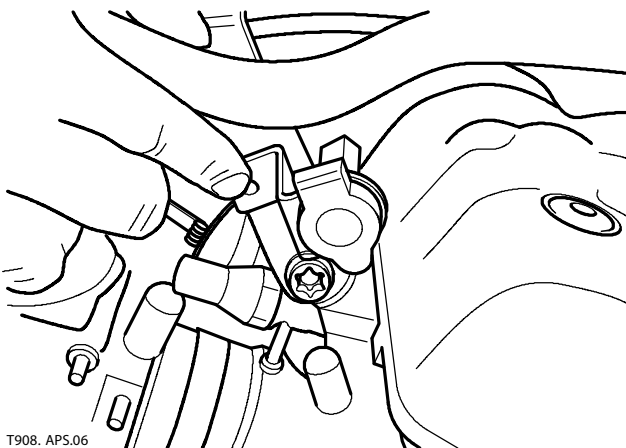
4. Nut

9. Fit the caged nut to the hole on the cylinder head right-hand rear mounting bracket.



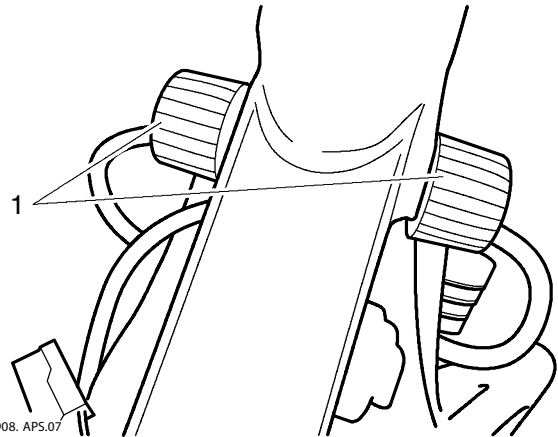
- 1. Caged nut**
2. Bracket hole

10. Fit the auxiliary power socket assembly to the mounting bracket and securely tighten its mounting screw.



11. Connect the auxiliary socket connector to the main wiring harness, ensuring the wiring is correctly routed.

12. Ensure the fuel tank front mounting rubbers are correctly fitted to the frame then refit the tank.



- 1. Fuel tank front mounting rubbers**

13. Securely reconnect the fuel hose and breather hose to the tank. On California models connect the evaporative loss system hose.

14. Ensure the collars and rear mounting rubbers are correctly fitted then install the fuel tank mounting bolts, tightening them to **9 Nm**.

15. Turn the fuel tap ON and check for fuel leaks.

16. Reconnect the battery, connecting the positive (+) terminal first. Install the seat, tightening its screws to **10 Nm**.